

WYAC 2025 BULLETIN 2

Mariánské Lázně, Czechia
July 2. - 6. 2025



Introduction

Dear Sports Friends,

The Czech Radioclub has been entrusted with organizing the 2025 IARU World Youth ARDF Championships. It is a great honor for us to welcome you again in Mariánské Lázně, where the IARU R1 ARDF Championships was held in 2015.

Miroslav Vlach, OK1UMY
Chairman of the Czech ARDF Association



Basic information

Organizer

IARU Region 1, Czech Radio Club (CRC)

Address

Czech ARDF Association
WYAC 2025 organizing committee
Zatopkova 100/2
Prague 6 – Strahov
CZ-169 00
Czech Republic



Contacts

Email: arob@ardf.cz
Web: www.wyac2025.cz
Phone: +420 602 220 024

Event center and accommodation

Student Hotel – Zlatý zámek
Mariánské Lázně, Klíčová 167/4
(2 - 4 beds per room)
Web: www.dmasjml.cz/hotel-zlaty-zamek



Event information

Schedule

- **Wednesday, July 2, 2025:** Arrival, training, opening ceremony
- **Thursday, July 3, 2025:** 1st race – classic 3,5 MHz
- **Friday, July 4, 2025:** 2nd race – classic 144 MHz
- **Saturday, July 5, 2025:** 3rd race – sprint, awarding ceremony
- **Sunday, July 6, 2025:** Departure

Accompanying competitions

- **Saturday, July 5, 2025 (afternoon):** Czech ARDF championships – foxoring
- **Sunday, July 6, 2025:** Czech ARDF championships - sprint

International Jury

- Chairman of the Jury Jiří Mareček, OK2BWN
- Secretary Marcela Šrůtová
- Siting referee Jan Michalec
- Representatives of all participating societies

Competition rules

IARU Region 1 Rules for Championships in Amateur Radio Direction Finding (Part A and Part B), version 2020 (part A), 2025 (part B)

<https://www.iau-r1.org/about-us/committees-and-working-groups/ardf/documents/ardf-rules/>

Child protection policy

http://www.ardf-r1.org/files/ CPP/IARU_Regi on_1_Child_Protecti on_Policy_Feb2016.pdf



Transmitters and antennas

3.5 MHz transmitters (classic)

- CONTEST2020, RF power: 3 W, A1A modulation
- Antenna: 8m vertical + 8 m single radial counterpoise
- Frequency:
 - TX 1-5 (MOE-MO5): 3.53 MHz
 - 1 min transmitting, 4 mins space
 - finish beacon (MO): 3.60 MHz
 - continuous operation

144 MHz transmitters (classic)

- CONTEST2020, RF power: 3 W PEP, A2A modulation (1 kHz, 80% AM)
- Antenna: crossed dipoles 3 m above the terrain
- Frequency:
 - TX 1-5 (MOE-MO5): 144.50 MHz
 - 1 min transmitting, 4 mins space
 - finish beacon (MO): 144.85 MHz
 - continuous operation

3.5 MHz transmitters for sprint

- CONTEST2020, RF power: 1 W PEP, A1A modulation
- Antenna: 8m vertical + 8 m single radial counterpoise fomed in the circle around the transmitter
- Frequency:
 - TX 1-5 (MOE-MO5): 3.53 MHz
 - keying speed: 50 PARIS
 - 12 sec transmitting, 48 sec space
 - Spectators control (S): 3.55 MHz
 - keying speed: 50 PARIS
 - continuous operation
 - TX 1F-5F (MOE-MO5): 3.57MHz
 - keying speed: 70 PARIS
 - 12 sec transmitting, 48 sec space
 - Finish beacon (MO): 3.60 MHz
 - keying speed: 50 PARIS
 - continuous operation



Categories

According to the IARU R1 ARDF Rules: W14, W16, M14, M16

Ranking

Individual for each category and each competition, team ranking for each category for the two classics. Competitors at 1.-3. places will be awarded with medals and certificates.

Technical information

- **Flags**

- **3.5 MHz and 144 MHz classics**

- Standard 30x30 cm 3-sided white and orange flag at all controls

- **Sprint**

- 30x30 cm 3-sided white and orange flag at S (spectator) and B (beacon) controls, red/white striped SI stand (no flag) at all other controls.

- **Registering devices**

SportIdent at all controls (NOT in the AIR mode), control numbers and bands are written on the SI units.

Transportation to the competition area

Transportation to the competition area will be provided by the organizer. It is **NOT allowed** to use own transportation to start area of any World championships competition.



Notes

- **Thunderstorm**

In a case of a severe thunderstorm, the Chairman of the Jury may recall the competition (ARDF Rules B 27.5).

In such case, it will be announced to competitors by switching off all the transmitters with an exception of the beacon and TX No. 1 (MOE, not necessarily the one placed in terrain) which both remain operating continuously. The competitors shall set for the finish immediately.

- **GPS devices**

The use of satellite positioning devices is allowed provided they do not contain digital map of the terrain.

- **Insurance and Medical Care**

First aid facility will be available at the finish areas for all competitions. No cost to the participant applies for on-site minor treatment; however, the cost for ambulance transportation, emergency department visits, and clinic visits will be the participant's responsibility. Thus, we recommend you purchasing an insurance covering such expenses.

- **Visa**

The citizens of most countries expected to take part in the WYAC 2025 do not need a visa to enter Czech Republic. The Schengen visa is valid for Czech Republic. Participants from a few countries (for example China) require a visa.

Please check for your country at:

https://mzv.gov.cz/jnp/en/information_for aliens/index.html

Registration

Deadline for letter of intent

March 15, 2025.

Letter of intent should be sent by email to arob@ardf.cz

Deadline for list of participants

June 10, 2025.



Fees

Starting fee WYAC 2025, if paid by May 31, 2025	1250 CZK per competition	(≈50 EUR)
Total for all three races (3x 1250 CZK)	3750 CZK	(≈150 EUR)
Official (team leader, coach) - total for all three races	3000 CZK	(≈120 EUR)
Visitors, others - total for all three races	1000 CZK	(≈40 EUR)
Starting fee WYAC 2025, if paid after May 31, 2025	1450 CZK per competition	(≈58 EUR)
Total for all three races (3x 1450 CZK)	4350 CZK	(≈174 EUR)
Official (team leader, coach) - total for all three races	3000 CZK	(≈120 EUR)
Visitors, others - total for all three races	1000 CZK	(≈40 EUR)
Accommodation & Full Board	900 CZK per day	(≈36 EUR)
Total for the whole event (4x 900 CZK)	3600 CZK	(≈144 EUR)

Payments

Wire transfer to the account:

Beneficiary: Asociace rádiového orientačního běhu ČR z.s.

Beneficiary Address: Zátopkova 100/2, 169 00 - Praha 6

Bank: MONETA Money Bank a.s.

BIC: AGBACZPP

IBAN: CZ68 0600 0000 0001 5498 8883

Account: 154988883 (bank code 0600)

Bank address: MMB a.s., Vítězné náměstí 577/2,
160 00 Praha 6, Czechia.

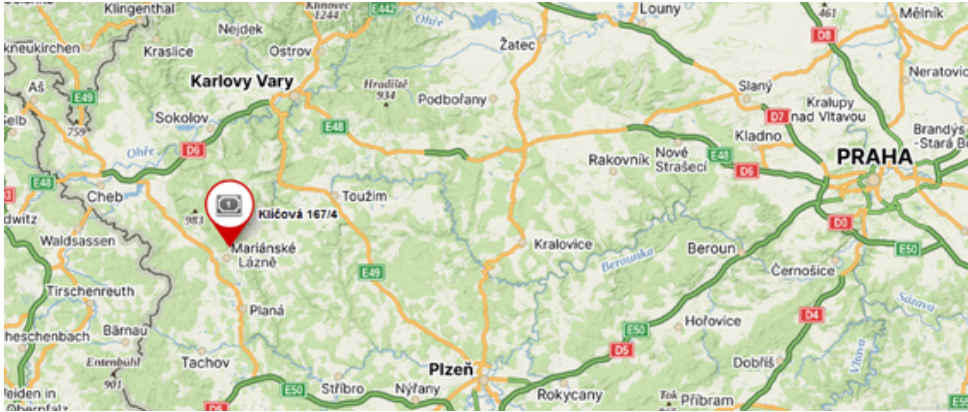
Transfers shall be carried in CZK. It is **your obligation** to pay all the bank fees. Therefore, you should set the “code for transfer” to “OUR” in your transfer form.



Transportation

Transportation:

- Prague – Mariánské Lázně (D5 – 170 km)
- Nürnberg (Germany) – Mariánské Lázně (A6 – 190 km)
- Railway: Prague – Cheb – Nürnberg (Germany)



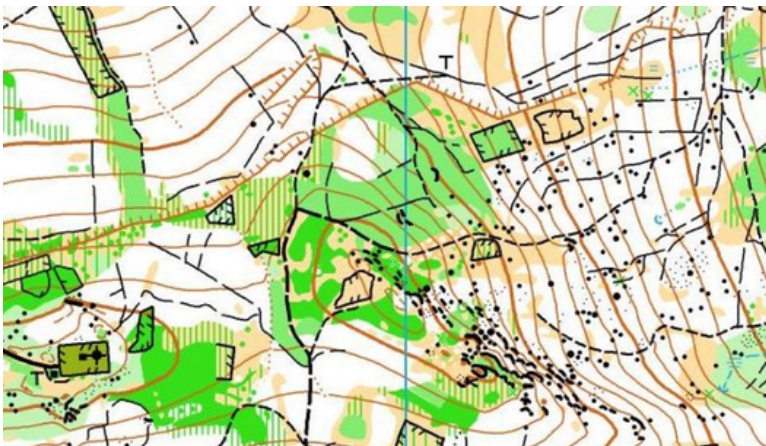
Maps and terrain

Terrain

Mountainous terrain with good network of paths and various open spaces.

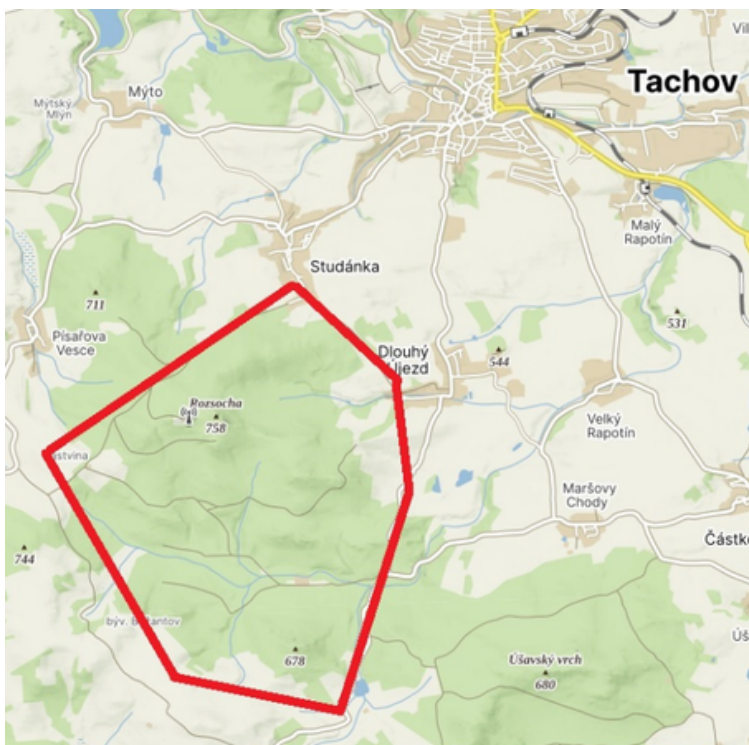
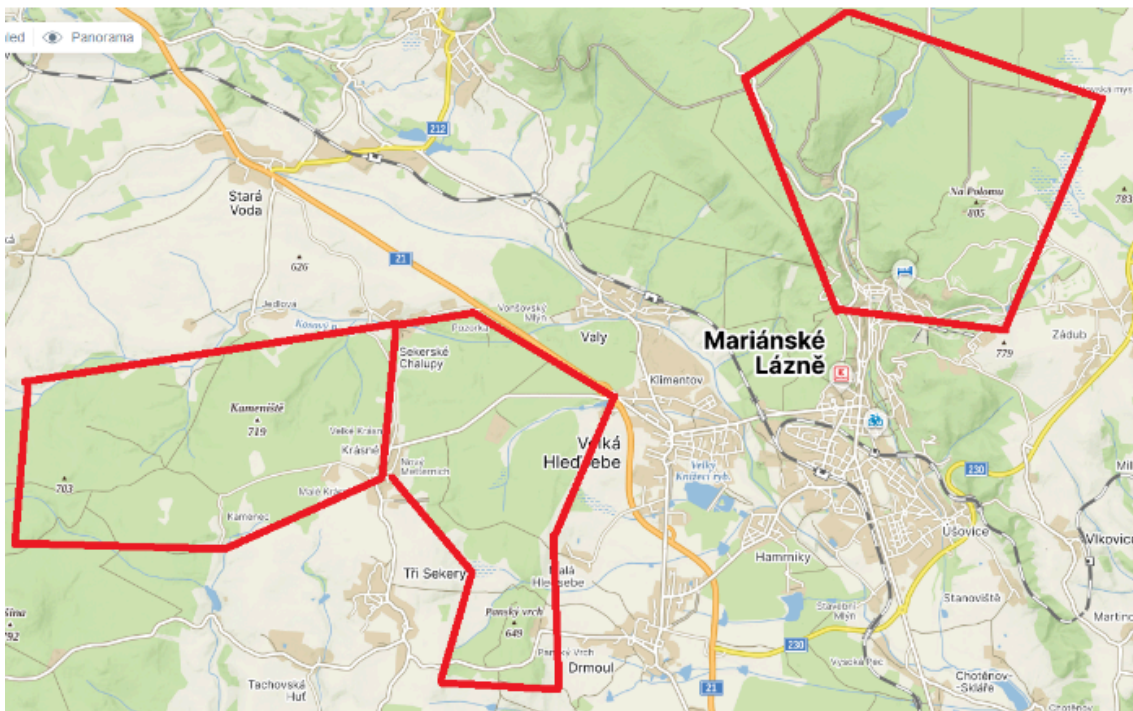
Maps

- Classic - IOF, 1:10000
- Sprint - IOF, 1:5000



Embargoed areas

As of the publishing date of this bulletin, it is forbidden to train or move around in any forested area within the highlighted areas below. Allowed exceptions are official orienteering events organized by Czech Orienteering Federation.



Partners and sponsors



**Akce je podporována Městem Mariánské
Lázně - EVROPSKÝM MĚSTEM SPORTU PRO ROK 2025**

**The event is supported by the town of Mariánské
Lázně - EUROPEAN TOWN OF SPORT FOR 2025**

